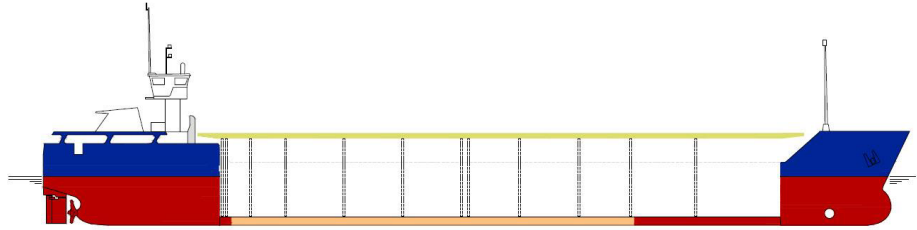


SHIPS PARTICULARS

MV MARIE



Callsign	ONJC	Port of Registry	Antwerp	Flag	Belgian
IMO number	9252929	Official No	735334	MMSI Number	205724000

SHIP SPECIFICATION			
Type of vessel	General Dry Cargo Ship – multipurpose single deck box shaped – one hold grain fitted - two moveable bulkheads – steel floored		
Builder	Slovenske Lodenice A.S. 94525 Komarno, Slovakia Republic	Year of delivery	2002
Operating area	Europe, N.Africa, Mediterranean	Service Speed	9,5 knots
Class. Society	Rina Class	P & I	CARINA
Hull & Machinery	BDM		

TONNAGE		DRAFTS	
Gross tonnage	2061	Summer	4, 956 m
Net tonnage	1161	Winter	4, 851 m
Summer Deadweight	2974	Summer freeboard	1, 466 m
Summer displacement	4078	Air draft in full ballast cond.:	20,5 m (mast up) / 21,8 (bridge up) / 9,3 (bridge & mast down)
DWCC Summer / Winter	2832 / 2732	Keel to highest fixed point	25 m
Light ship	1089, 2		

DIMENSIONS			
Length over all	88, 49 m	Cargo hold dimension	57,5 m x 9,0 m x 8,04 m
Length between perp.	84, 68 m	Hatch Cover Type	Kvaerner Multi-fold crocodile
Breadth moulded	11, 35 m	Box opening hatch	57, 5 m
Breadth Extreme	11, 40 m	Box opening hatch –storage bulkheads	56, 6 m
Depth (moulded)	6, 422 m	Hatch Dimensions (L x B)	1 hatch 57,5 x 9,0 m
SWL Tanktop	12,0 T/m ²	Hold capacity grain/bale	4162 m ³ / 146,969 cbf
SWL Hatch cover	1,6 T/ m ²	Containers 20' (hold/hatch)	78/48

TECHNICAL SPECIFICATIONS	
Main Engine	1 x Deutz SBV 6M 628 - 1.125kW
Bowthruster	130 KW
Fuel	MGO
Electrical Ventilation	YES – 6 airchanges/hour
IMO Fitted	YES – various classes

TANK CAPACITY	
Ballast Water	1145, 00 m ³
Gas oil	135, 00 m ³
Fresh Water	23, 00 m ³



chartering@boeckmans.be